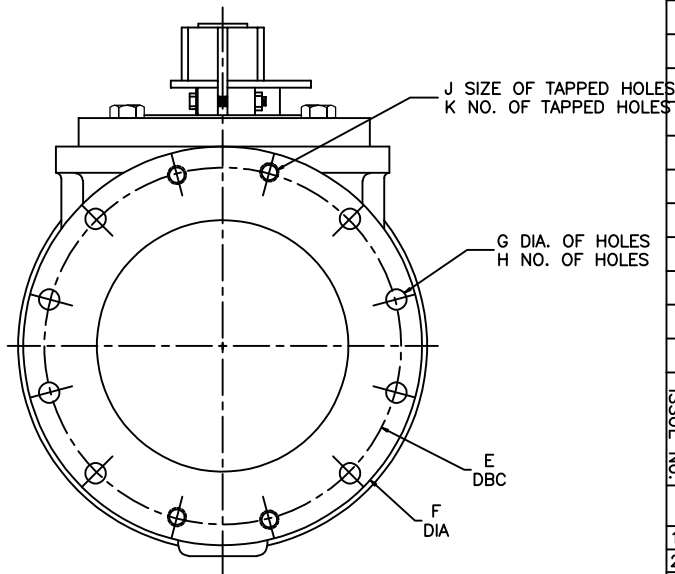
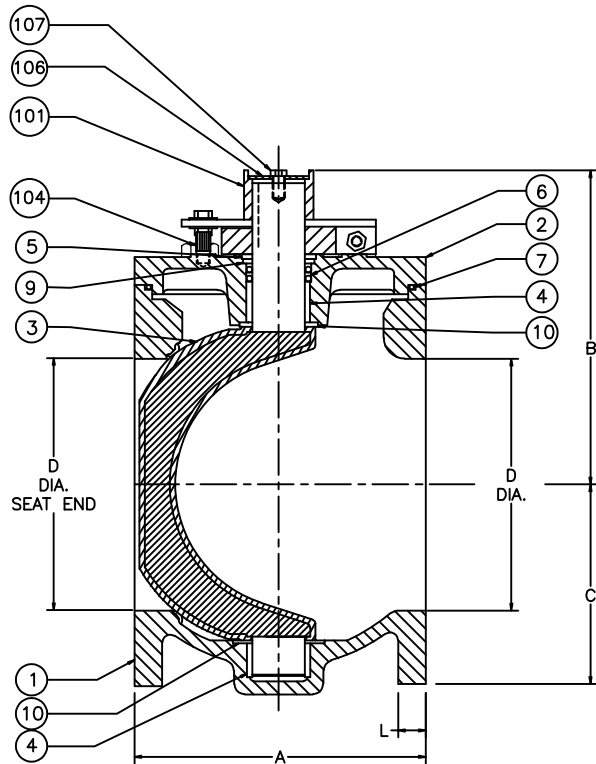


4
VALVE WITH TORQUE COLLAR
AND OPTIONAL "D" WRENCH
(WRENCH SUPPLIED ONLY IF ORDERED)



VALVE SIZE	A	B	C	D	E	F	G	H	J	K	L
2 1/2	7.50	6.19	3.50	2.50	5.50	7	0.75	4	--	-	0.69
3	8	6.19	3.75	3	6.00	7.50	0.75	4	--	-	0.75
4	9	7.25	4.50	4	7.50	9	0.75	6	0.63	2	0.94
5	10	8.38	5.75	5	8.50	10	0.88	6	0.75	2	0.94
6	10.50	8.38	5.75	6	9.50	11	0.88	6	0.75	2	1
8	11.50	10.69	7.63	8	11.75	13.50	0.88	6	0.75	2	1.13

REFERENCE ONLY

THIS DRAWING IS THE PROPERTY OF
HENRY PRATT COMPANY
AND MUST NOT BE USED IN ANY WAY
PREJUDICIAL TO THEIR INTERESTS

107	1	S.H. CAP SCREW	STL/ZINC
106	1	RETAINING WASHER	STL/ZINC
105	1	TORQUE ADJ. BOLT	STL/ZINC
104	1	BODY STOP	STL/ZINC
103	1	ADJ. CLOSE STOP	STL/ZINC
102	1	ADJ. OPEN STOP	STL/ZINC
101	1	TORQUE COLLAR	DUCTILE IRON
10	2	GRIT SEAL	PTFE
9	1	SEAL REATINING RING	BRASS
8	AR	H.H. CAP SCREW	<input type="checkbox"/> STEEL <input type="checkbox"/> STN. STEEL
7	1	O RING	ELAS AS SPEC.
6	2	U CUP SEAL	ELAS AS SPEC.
5	1	SNAP RING	SPRING STEEL
4	2	SLEEVE BEARING	STN. STEEL
3	1	PLUG ELASTOMER AS SPEC.	DUCTILE IRON
2	1	CAP	CAST IRON
1	1	BODY	CAST IRON

ITEM	QTY	DESCRIPTION	MATERIAL
PRATT			
ISSUE NO.		DATE	REVISIONS
		10/93	CHANGED SHAFT
		7/97	REDRAWN ON CADD
		1/99	REDID ITEMS 10-107 ROTATED OPEN STOP 90 DEGREES ADD CAP SCREW 107
		11/99	ITEM 8 WAS BRONZE
		11/13	ADDED ISOMETRIC VIEW
BY		DATE	SCALE
CR		7/97	NONE
CHK'D		DIMENSIONS INCHES	
TITLE:		2 1/2"-8" PLUG VALVE, FULL PORT, FLANGED, WRENCH OPERATED	
DWG. NO.		HP49010-FP	