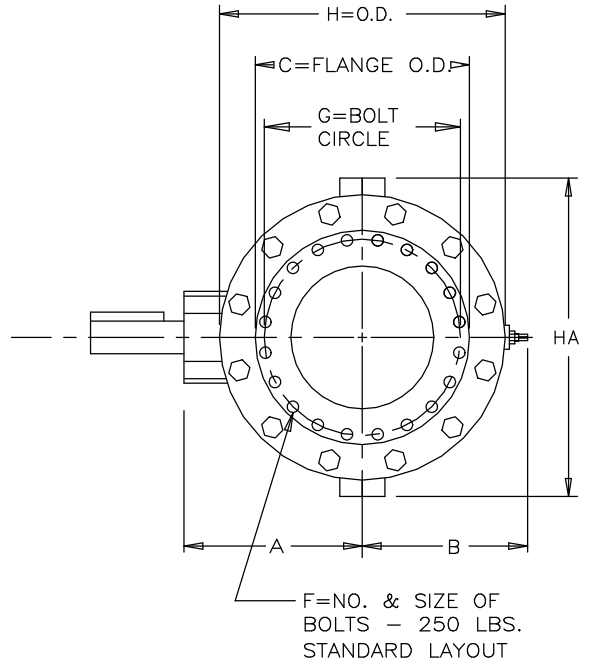
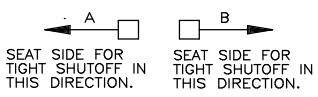
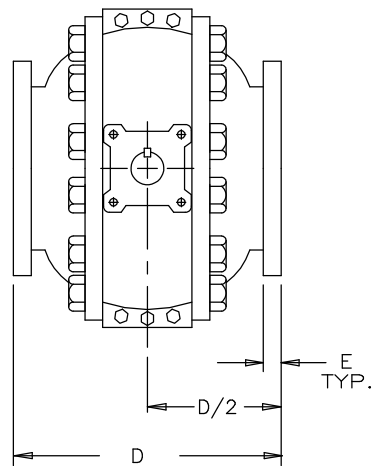


VALVE SIZE	A	B	C	D	E	F	G	H	HA
6	11	12	12-1/2	14-7/8	1-7/16	12 x 3/4	10-5/8	16	16-1/4
8	12-3/8	13	15	15-1/4	1-5/8	12 x 7/8	13	18-5/8	18-1/2
10	13-3/4	15	17-1/2	20-1/8	1-7/8	16 x 1	15-1/4	21-1/2	22
12	15-1/8	17	20-1/2	21-3/8	2	16 x 1-1/8	17-3/4	24-1/4	25
14	16-5/8	18	23	26-1/2	2-1/8	20 x 1-1/8	20-1/4	27-1/4	29
16	17-7/8	19	25-1/2	27	2-1/4	20 x 1-1/4	22-1/2	29-11/16	32-1/4
18	19-1/4	21	28	31	2-3/8	24 x 1-1/4	24-3/4	32-7/16	36-1/8
20	20-3/8	22	30-1/2	34	2-1/2	24 x 1-1/4	27	34-5/8	39
24	23-1/4	24	36	39-1/8	2-3/4	24 x 1-1/2	32	40-9/16	45-3/4
30	28-1/4	28	47-1/4	47-1/4	3	28 x 1-3/4	39-1/4	48-1/4	56
36	32-3/4	32	50	55	3-3/8	32 x 2	46	56-3/8	66-1/4
42	37-11/16	36	57	63	3-11/16	36 x 2	52-3/4	63-1/8	76-1/8
48	42-7/16	40	65	74-1/2	4	40 x 2	60-3/4	71-1/8	85-3/4



- NOTES:
- ALL DIMENSIONS SHOWN IN INCHES. "D" DIMENSION ±1/8".
  - DIMENSIONS AND DRILLING OF END FLANGES CONFORM TO THE AMERICAN CAST IRON FLANGE STANDARDS, CLASS 250 (B16.1).
  - (RECOMMENDATIONS FOR MATING FLANGES) WHERE INSULATING BUSHINGS ARE USED, IT IS NECESSARY THAT BOLT HOLES BE DRILLED OVERSIZE BY AN AMOUNT EQUAL TO TWO TIMES THE INSULATING SLEEVE THICKNESS TO MAINTAIN THE SAME MINIMUM CLEARANCE FOR BOLTS.
  - VALVES MANUFACTURED AND TESTED IN ACCORDANCE WITH AWWA SPECIFICATIONS C-507-(LATEST REV).
  - VALVE ROTOR SHOWN IN OPEN POSITION.
  - ACTUATOR IS MOUNTED IN POSITION NOTED BELOW.
  - DIMENSIONS GIVEN ARE NOMINAL ENVELOPE AND SHOULD NOT BE USED IN PLACE OF CERTIFIED DRAWINGS.

PAINT: INTERIOR OF VALVE: \_\_\_\_\_  
 EXTERIOR OF VALVE AND ACTUATOR: \_\_\_\_\_

RECOMMENDED FILTRATION  
 FOR CYLINDER SUPPLY MEDIA  
 AIR \_\_\_\_\_ 50 MICRONS (DRY)  
 OIL \_\_\_\_\_ 150 MICRONS  
 WATER \_\_\_\_\_ 100 MICRONS

CYLINDER PRESSURE - P.S.I.: MIN. \_\_\_\_\_ MAX. \_\_\_\_\_  
 CYLINDER MEDIA : AIR \_\_\_\_\_ OIL \_\_\_\_\_ WATER \_\_\_\_\_

REV	DATE	BY	DESCRIPTION	APP.
				HENRY PRATT COMPANY AURORA, ILL.
GENERAL ARRANGEMENT 6"-48"300# METAL SEAT BALL VALVE				
SCALE		DATE		
DRAWN BY		CHECKED BY		
APPROVED		GA=BORDER		
DRWG. NO. GA-11590				REV o A/c